

AVALON

BARDOT



SPECIAL EVENTS BROCHURE
WWW.AVALONHOLLYWOOD.COM

INTRODUCTION



1735 N Vine has always been at the center of Hollywood's nightlife evolution. Since it first opened its doors in the 1920s, it has hosted the likes of Bing Crosby, Frank Sinatra, The Beatles' first West Coast gig, Duran Duran, Madonna, Prince, The Rolling Stones, Nirvana and The Beasties Boys to name a few.

In order to continue this long lasting legacy in the Los Angeles events and nightlife scene, highly skilled craftsmen worked around the clock in late 2014 on the meticulous restoration and dramatic upgrade of this 1927 Hollywood Landmark. Without compromising the Spanish Colonial architecture of this historic space, Avalon continues to evolve and upholds the distinction of the most prestigious venue in Los Angeles for live performances and events.

TYPES OF EVENTS

Award Shows / Premieres / Screenings /
Film Shoots / Wrap + Launch Parties /
Concerts / Corporate Events / Conferences
/ Fashion Shows / Weddings/
Social Gatherings



SPECIAL EVENTS

With its legendary Hollywood & Vine location, Avalon has housed some of the most publicized and diverse events in Los Angeles. The layout of the building allows for a wide range and variety of events. Our expert planners are on hand to make your vision a reality and all within your budget.



VENUE SERVICES

In-House Catering Hosted By Carl Coulam
/ Event Coordination / Full Production
Security / Staffing / Beverage Packages /
Furniture Rentals + Decor / Parking /
Power + Wifi



AVALON + BARDOT / SPECIAL EVENTS





AUDIO



Consoles

- Midas M32

This 32 input 16 output console comes with the venue as standard equipment. There is a wireless router for complete remote control (with appropriate app) via phone or tablet. Our standard set up, using this console, can independently control all house speaker zones including the concert and club systems plus up to 6 monitor mixes. This console can be used at Front of House or on stage and is normally set stage right.

- Avid Venue SC48

This console is available for Live Music when separate FOH and MON consoles are needed.

FOH

- EAW flown line array - KF760 (2 per side) KF 761 (4 per side)
- 6 x EAW Avalon series Sub.one-JL
- Delayed balcony fill's - 2 x flown EAW DC1's
- Front fill's - 2 x Martin Audio WT2's

Monitors

- Both house consoles have 16 outputs for IEM's or floor wedges
- 4 x Martin LE 700 bi-amped wedges
- 1 x Martin LE12j (cue wedge)

Whirlwind Snake

- 48 ch. send
- 8 ch. return
- 2 way split

Mics & DI's

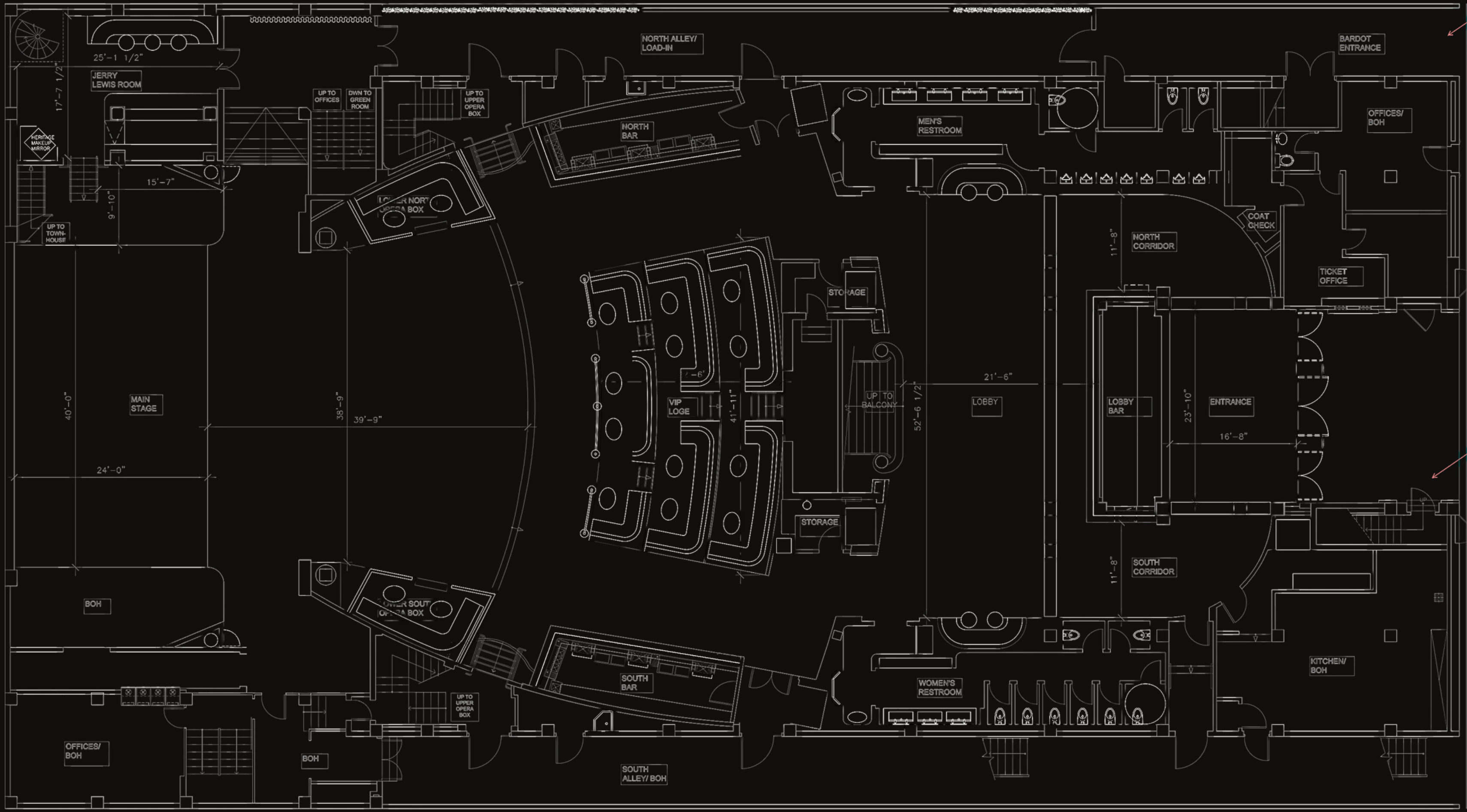
- complete package of mics, stands, direct boxes and cables
- Including two Shure wireless hand held vocal mics (SM58).

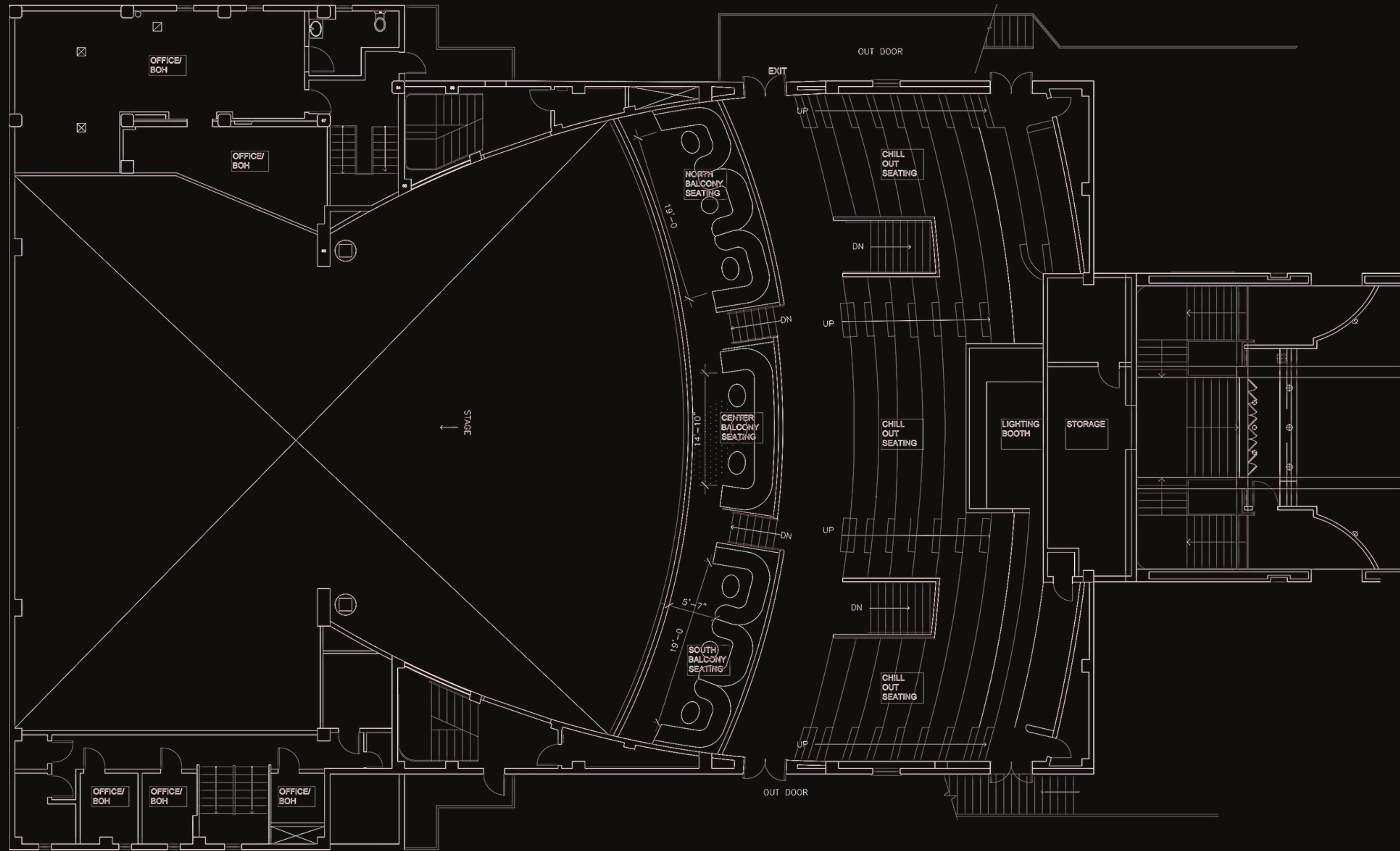
Risers

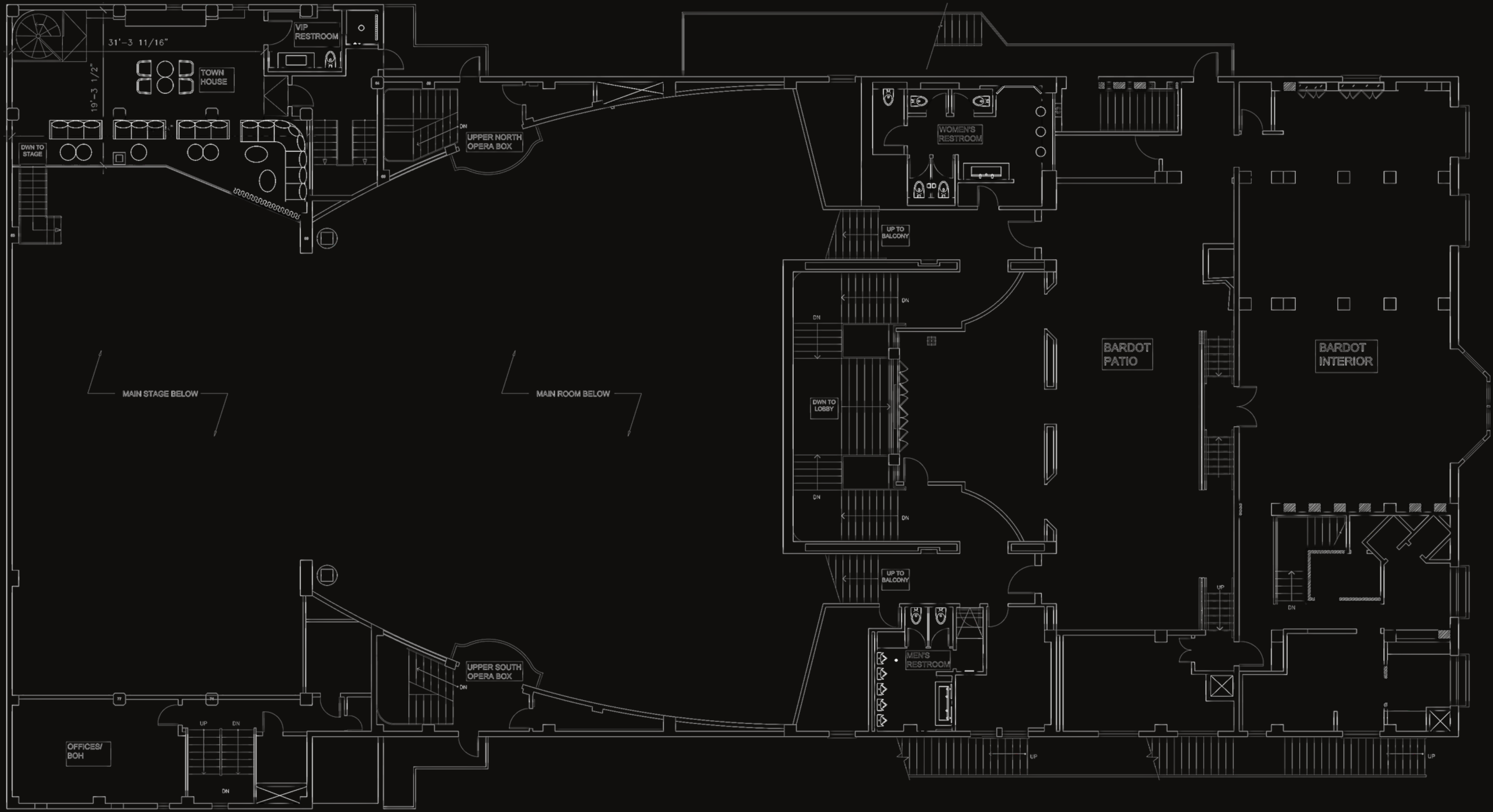
- large inventory of Steeldeck in various sizes
- 1', 18", 2', 3' & 4' size legs (riser height)

Power

- 6 x 30amp dedicated audio circuits on stage (Edison)
- 400 amp 3 phase disconnect (Cam-Lok) off stage left







BARDOT

Nestled on the second floor of the Avalon lies the sanctuary we call Bardot, influenced by the roaring 20's, Bardot boasts three spaces in which to gather.



The lounge Bar features banquettes against dimly lit golden ochre walls where food and drink can be enjoyed in privacy. The Courtyard rests under the stars with its charcoal wood flooring, assortment of vintage oil portraits and rich cordovan color brushed on the walls. The Tented Bar adds to the oasean ambience with its magnificent textiles, scones, and chandeliers.

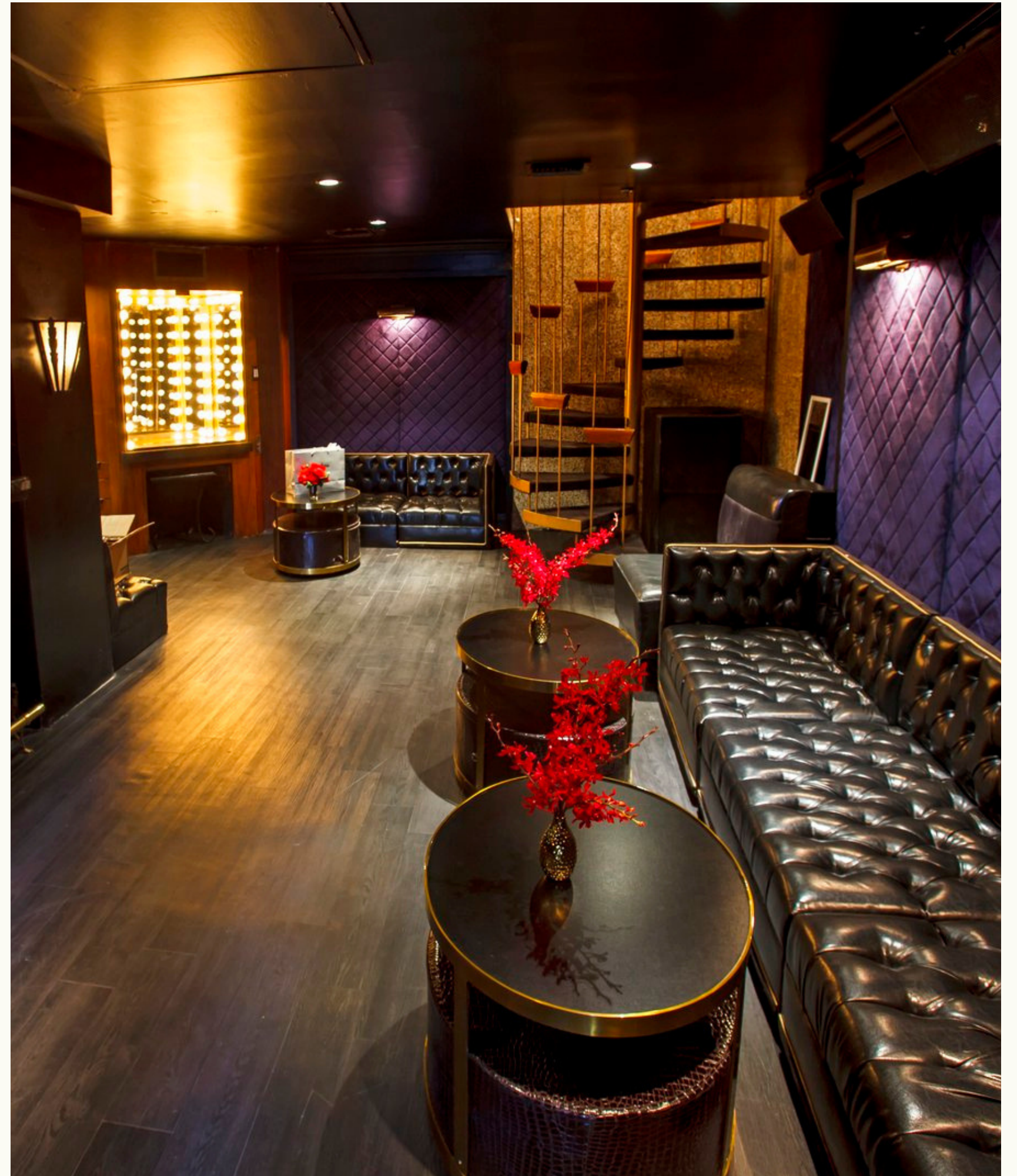




ZEBRA ROOM



RED ROOM



JERRY LEWIS ROOM



AVALON HOLLYWOOD

1735 North Vine
Street Hollywood, CA
90028

AVALONHOLLYWOOD.COM



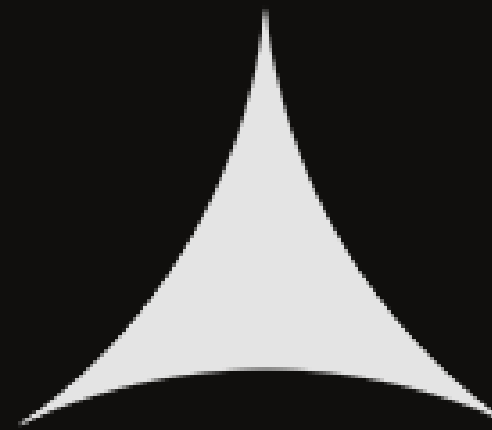
CONTACT

LESLIE SIMMONS

Director of Special Events

leslie@avalonhollywood.com

323.466.0270



MELODY ALARCON

Special Events Manager

melody@avalonhollywood.com

AVALON + BARDOT / SPECIAL EVENTS



BARDOT

1737 North Vine
Street Hollywood, CA
90028

AVALONHOLLYWOOD.COM/BARDOT